



WELCOME TO CIVIL ENGINEERING ASSIGNMENTS

Civil Engineering Assignments is an independent, innovative, customer focused civil design and drafting company.

www.civil-ea.com

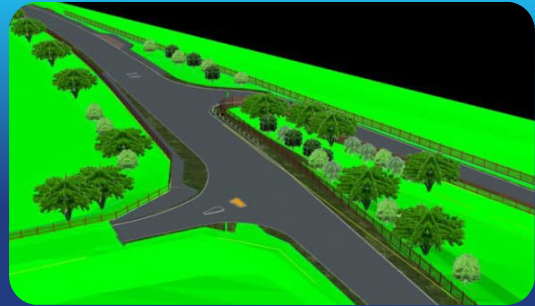
SERVICES

We offer a wide range of services , from simple CAD plans to a set of design drawings specific to the client's requirements. We also offer 3D modelling utilising specialist software in order to ensure the design is accurate and topography is accounted for.

HIGHWAY/ROAD DESIGN

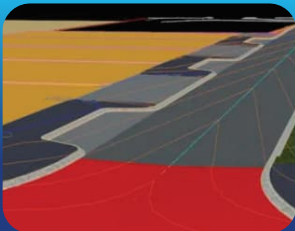
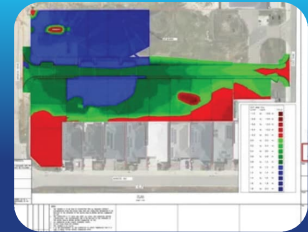
From concept design through to issued for construction. CEA are able to provide 2D geometric layouts and 3D models of road upgrades utilising specialist 3D modelling software.

Testimonials can you add Armadale council to Dianas and City of Vincent to Lukes and the department of planning to the other.



CIVIL DESIGN/ EARTHWORKS

Providing bulk earthwork volumes and isopachyte plans can help with costing a project during the tender phase.



3D MODELLING & BIM SERVICES

Utilising specialist software, we are able to provide visualisations to help clients see what is proposed. Clash detection can identify issues prior to construction saving time and money for the client

VEHICLE SWEEP PATH ANALYSIS

Based on Client and project requirements , we are able to simulate vehicle movements within the proposed site.



DRAFTING SERVICES

We can provide simple red pen markup adjustments to your existing drawings , or a complete design set.

EXPERIENCE



Stephen Todd
Director
Principal Design Engineer



Stephen is a degree qualified Civil Engineer with over 19 years' experience, focusing on highways and civil infrastructure. Stephen has worked on both maintenance and major projects in the UK, New Zealand and Australia.

Stephen began his career in 2006 as a trainee civil engineering technician in the UK working on small scale highway maintenance projects as part of the North Yorkshire Term Maintenance Contract. This allowed him to gain a rounded experience; attending meetings, undertaking site measures and completing design and drafting on his own projects.

Stephen obtained his BTEC Ordinary National Certificate (ONC) in Civil Engineering, part time while working in his role as a trainee technician; allowing him to put theory into practice. Over the next 2 years Stephen continued to balance work and learning undertaking his Higher National Certificate (HNC), while increasing his responsibilities within the workplace. Upon completing his HNC, Stephen undertook and successfully passed his EngTech qualification with the Institute of Highway Engineers, gaining registration to the Engineering Council UK in 2010.

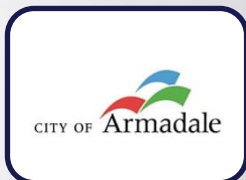
At this stage in his career Stephen opted to move to New Zealand to gain experience on a personal and professional level. Stephen worked on small scale projects as a Civil Engineering Technician in rural New Zealand for 6 months before moving again. This time to Perth Australia, to work on large rail infrastructure projects as Technical Officer for nearly 2 years. Due to the economic downturn in 2013, Stephen returned to the UK. Stephen decided to create Civil Engineering Assignments Ltd to work as a contractor while attending university part time to undertake his BSc in Civil Engineering for the next 3 years. During this time Stephen worked numerous contracts for major civil engineering consultants in roles ranging from CAD Technician, Assistant Engineer, Project Engineer and Engineer.

In 2019 Stephen returned to Perth Australia, initially as an employee at several companies as a Senior Engineer. Until the formation of Civil Engineering Assignments in 2022. Now, via Civil Engineering Assignments, Stephen brings his wide range of skills and experience to his clients to help them deliver cost effective, high quality infrastructure. Stephen gained Incorporated Engineer status with the Institute of Highway Engineers in 2023 improving upon his Eng Tech obtained in 2010.

CLIENTS AND TESTIMONIALS



TESTIMONIALS



“Working with Stephen on our projects has been a pleasure, easy, responsive and has provided exactly what we asked for and on time.

The City of Armadale will be seeking further quotations from CEA on future projects and would be happy to work with Stephen again.”



“Civil Engineering Assignments have a great customer focus and continue to provide high level technical services to the City of Vincent's Engineering team on various capital works projects”



“CEA provided the Department with sketches under such short notice and time pressure. Fantastic work was delivered.”

PROJECTS



Location : Highbury, Perth , WA, Wright & Broome Street
Client: City of Vincent

A new compact roundabout was designed to replace an existing cross roads intersection.

CEA provided design and drafting documentation for each car park from 15% design to IFC.

Key Points:

MRWA Signs and Line Markings AustRoads Part 4B
AustRoads 6A
AustRoads 8
MRWA Supplements



Location : City Beach, Perth , WA City Beach Car Parks 305, 307 & 308
Client: Town of Cambridge

These popular beach car parks were upgraded to include for a newer layout with additional pedestrian access and footways added.

CEA provided design and drafting documentation for each car park from 15% design to IFC.

Key Points:

AS 2890
AustRoads 6A



Location : MRRG Programs, Perth, WA
Client : Town of Cambridge

Various sites across the Town's road network were identified via assets condition surveys as near to their life cycle end. Proposed Treatments were assigned based on pavement testing.

CEA completed the design documentation for civil pavement plans and minor civil upgrades along with the associated signs and line marking plan.

Key Points:

MRWA Signs and Line Markings



Location : Lemnos Street, Perth , WA
Client: City of Nedlands

Lemnos Street is a very busy road with high volume of heavy good vehicles using it. It had been identified as requiring treatment due to its poor condition. Other assets were upgraded such as drainage pits, kerbing and bus stop location within the project scope.

CEA provided design and drafting documentation for each car park from 15% design to IFC.

Key Points:

PTA Infrastructure - Bus Stop Guidelines
MRWA Signs and Line Markings
AustRoads 4
AustRoads 4A
AustRoads 6A

PROJECTS

Location : Malibu Road, Safety Bay , WA
Client: City of Rockingham

Malibu Road, Blackspot Application 25-26

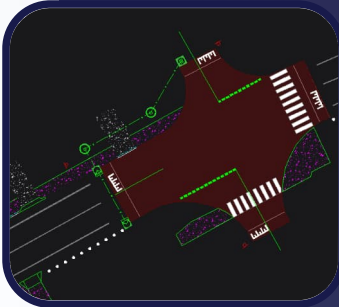
Malibu Road is approximately 1.6kmlong with numerous intersections and points of interest. The scope proposed installation of two single lane roundabouts , the first at Malibu Rd/ Waikiki Rd and the other at Malibu and Antigua Str. , a right turn lane at Malibu and Bahama PI while adding a raised intersection outside Safety Bay Senior High.

To compliment this safety feature a new 2.0m width footpath was proposed for the north side of Malibu Road.

CEA provided design and drafting documentation for each location for concept design / funding application purposes.

Key Points:

- MRWA Signs and Line Markings
- AustRoads 4
- AustRoads 4B
- AustRoads 4A
- AustRoads 6A
- MRWA Supplements

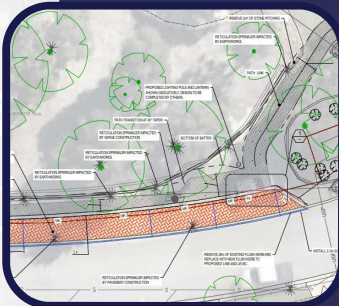


Location : Rossette Place, Piara Water, WA
Client : City of Armadale

This project required the modelling and drawing production of a parking embayment within a residential cul-de sac. Additional consideration and modelling was undertaken to provide a further path connection from the back of the embayment to the existing path within the adjacent park.

Key points:

- AS 2890
- AustRoads Part 4
- AustRoads Part 6A



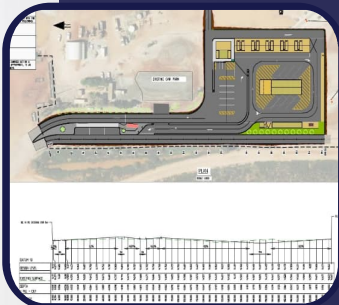
Location : Waste Transfet Station, South Hedland, WA
Client : VPE Consulting

CEA regularly sub-consult to VPE on projects requiring civil design modelling and drafting.

CEA were commissioned to undertake and complete design drawings for 35% , 50% , Tender and 100% design phases on this project.

Key points:

- AS 2890
- AustRoads Part 3
- AustRoads Part 4
- AustRoads Part 6A





ABN :29941067530

✉ stephen.todd@civil-ea.com

🌐 www.civil-ea.com

PROFESSIONAL INDEMNITY INSURANCE: \$5M
PUBLIC LIABILITY INSURANCE : \$20M